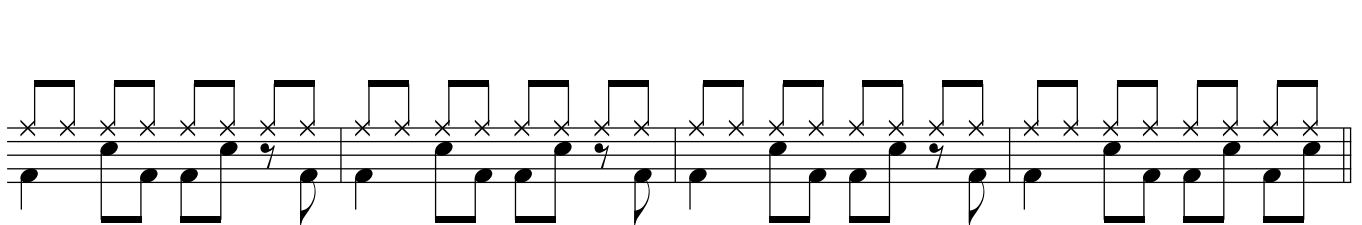
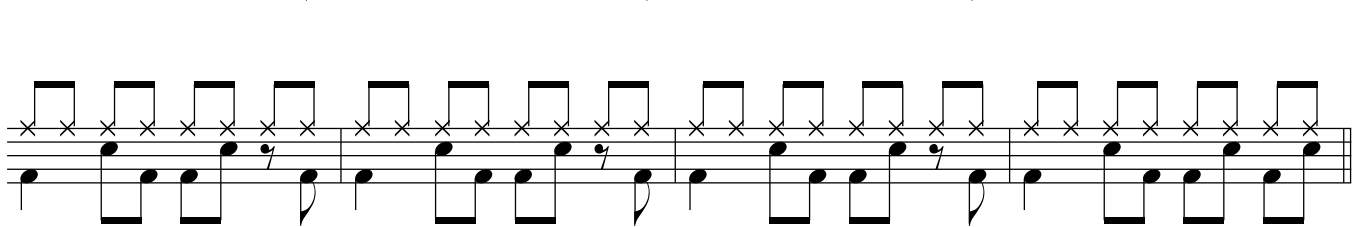
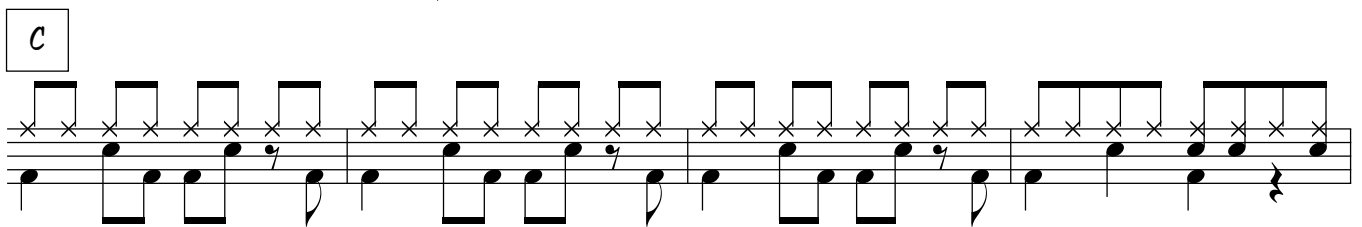
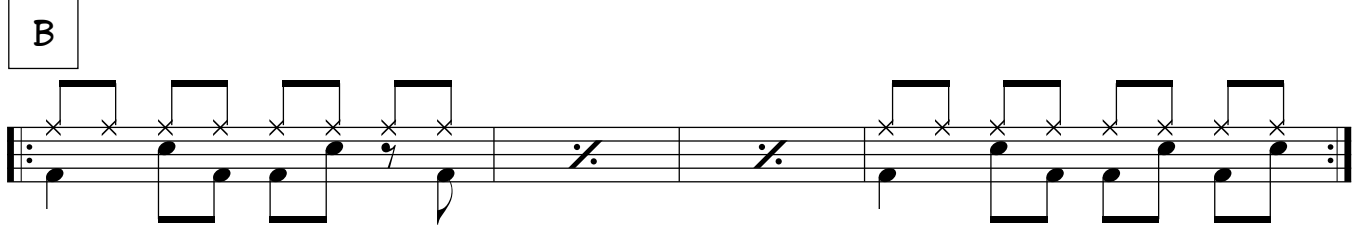
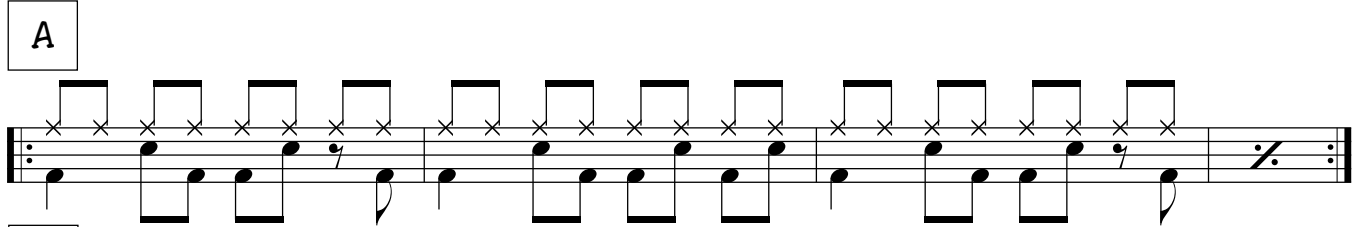
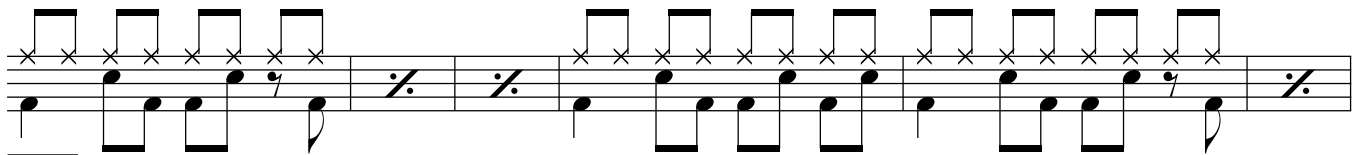
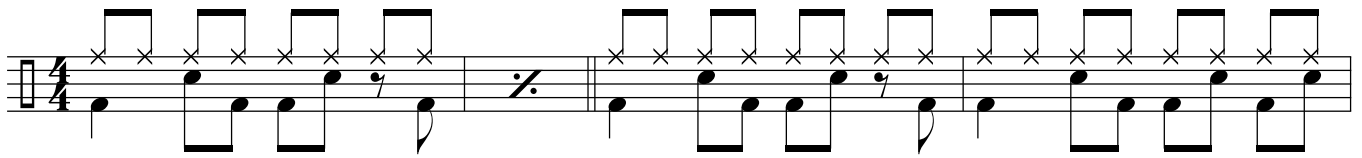


A music student of mine recently gave me a cd mix of Keith Richard's favorite tracks. The subject intrigued me, of course. Among the expected blues tracks came this rare gem by Ike & Tina Turner, released in 1964, and just hitting the Top 100 at #95. Cool and funky, a hit in my book.

# I Can't Believe What You Say

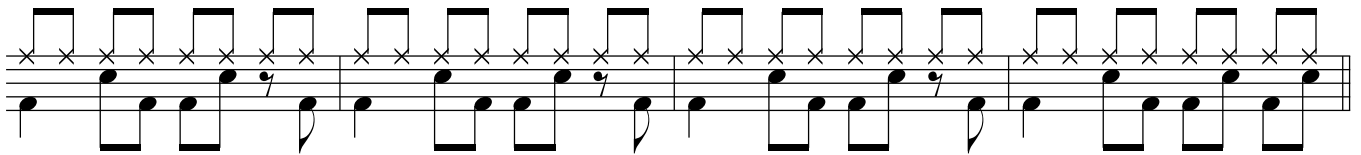
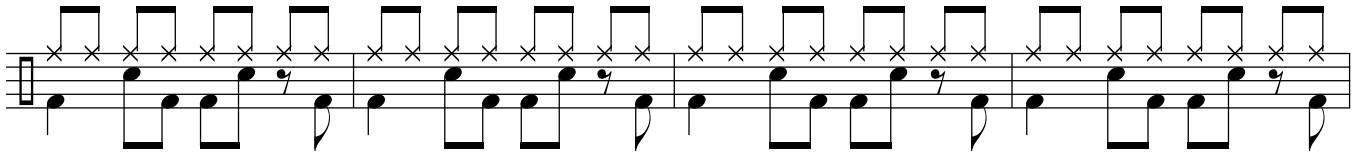
AS RECORDED BY IKE & TINA TURNER



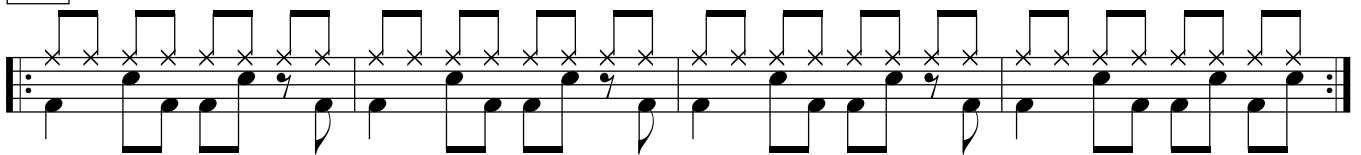
# I Can't Believe What You Say

-2-

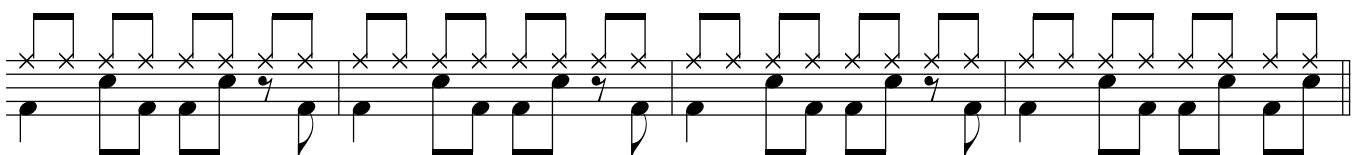
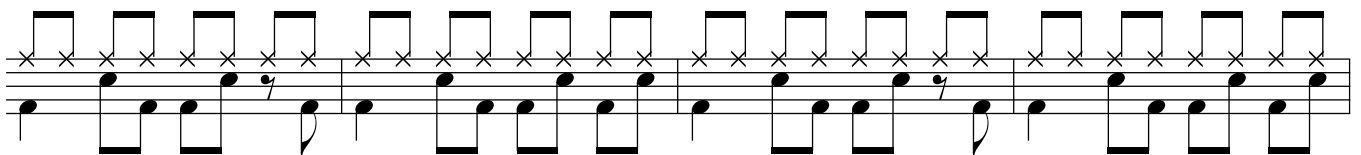
D (SAX SOLO)



E



F



G (4X WITH FADE)

